



**VIESSMANN**

COMMERCIAL GAS CONDENSING BOILERS

Advanced condensing technology for  
commercial applications

**VITODENS 200-W, CASCADE**

**VITOCROSSAL 200, CI2**

**VITOCROSSAL 300, CA3B**



You can rely on Viessmann  
for cost effective  
and energy efficient  
commercial heating  
systems with long service  
life and impressive  
reliability.

COMMERCIAL GAS CONDENSING TECHNOLOGY

VITODENS 200-W CASCADE

Prefabricated multiple boiler system with Vitodens 200-W gas-fired condensing boilers. **Rated input: up to 4,240 MBH**

The Vitodens 200-W cascade system is ideal for small or difficult-to-access boiler rooms or facilities with narrow halls and stairwells. These cascade systems offer flexible installation with multiple manifold configurations: wall-mounted, floor standing, corner or back-to-back. A right or left-mount low-loss header acts as hydraulic break and helps eliminate air and debris.

BENEFITS AT A GLANCE

- + Low-emission combustion for environmentally-friendly operation
- + Intelligent Lambda Pro gas management system automatically adjusts to different gas qualities for optimum efficiency and performance
- + Common venting up to four boilers†

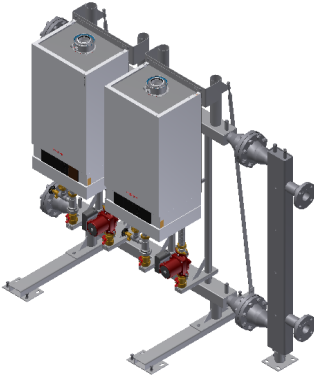
† In accordance with local codes and regulations



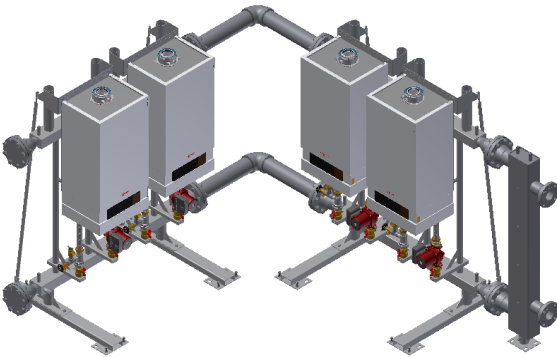
Technical Data

		B2HA					B2HE	
Model		285	311	352	399	530	150	199
Min.- Max. Input (single boiler)*	MBH	71 - 285	71 - 311	71 - 352	113 - 399	113 - 530	14 - 150	14 - 199
Min.- Max. Input (multiple of 8)*	MBH	71 - 2,280	71 - 2,488	71 - 2,816	113 - 3,192	113 - 4,240	14 - 1200	14 - 1592
Weight (single boiler)	lbs	194	194	194	298	298	179	179

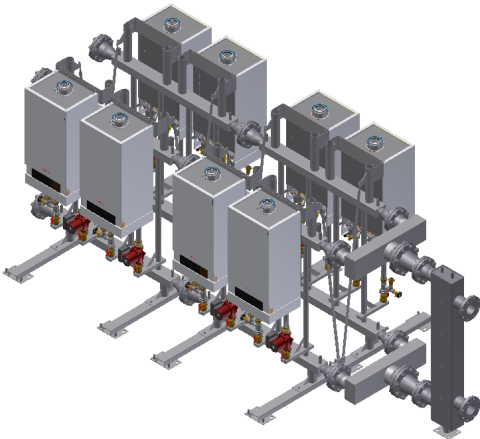
\* Input based on natural gas



2-boiler cascade system



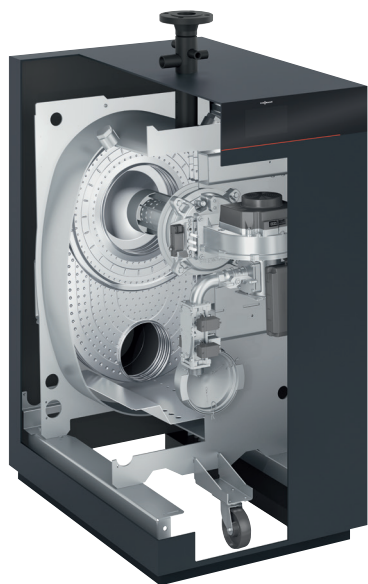
4-boiler cascade system in corner configuration



8-boiler cascade system in back-to-back configuration



# VITOCROSSAL 200, CI2



At only only 27 inches (68 cm) wide without jacket, the Vitocrossal 200, CI2 is well suited for tight commercial spaces. A stainless steel Inox-Crossal heat exchanger re-designed to stand up to the toughest of water conditions, maximizes performance and reliability while reducing overall size by 30%. Lambda Pro<sub>2</sub> with Self Calibrating Active O<sub>2</sub> Trim automatically adjusts to multiple vent options and lengths, gas type and quality right out of the box; no calibration required.  
**Rated input: 399 MBH - 2,000 MBH (single) / 32,000 MBH (cascade)**

## BENEFITS AT A GLANCE

- + Integrated Valve Proving System (VPS) for all sizes
- + Up to 98% thermal efficiency, the highest degree of utilization in its class with cleaner combustion and lower costs
- + Highest water volume in class; no primary boiler pump required
- + Up to 30:1 modulating MatriX cylinder burner ensures long, uninterrupted operation; meets Low NOx certification
- + Convenient servicing - all components are accessible from the front and back of unit
- + External wall mounted Gateway or DIN rail mounted Gateway for up to 8 boilers per gateway. Modbus ICP, Modbus RTU, Bacnet IP, and Bacnet MSTP
- + Utilizes CANbus communication between boilers and gateway system without complex wiring

## Technical Data

Model	CI2	399	500	750	1000	1500	2000
Combustion Efficiency *	%	97	97	96.9	96.8	96.6	96.5
Thermal Efficiency *	%	98	97.9	97.8	97.7	97.3	97
Min. Input (NG)	MBH	50	50	75	100	50	100
Max. Input (NG)	MBH	399	500	750	1000	1500	2000
Output (thermal efficiency)	MBH	391	490	734	977	1460	1940
Overall Dimensions							
Width	in.	29½	29½	29½	29½	29½	29½
Height	in.	64½	64½	64½	64½	78¾	78¾
Depth (Length)	in.	39	39	47¼	47¼	56¼	56¼
Weight (burner, control and insulation)	lbs.	789	789	963	963	1812	1969
Boiler Water Content	USG	29	29	50	50	113	99
Heat Exchanger Surface Area	ft²	65.2	65.2	129.4	129.4	196.2	258.8
Max. Operating Pressure	psig	80	80	80	80	80	80
Max. Operating Temperature	°F	210	210	210	210	210	210
Flue Outlet Size	Ø in	4	4	6	6	6	8

\*Tested to ANSI/AHRI Standard 1500 Performance Rating of Commercial Space Heating Boilers / DOE Test Procedure 81 FR89276 / U.S. Standards ANSI Z21.13 / CSA 4.9



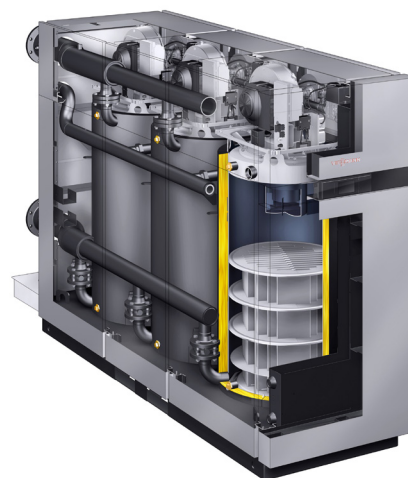


## VITOCROSSAL 300, CA3B

CA3B Series high-efficiency, gas-fired condensing boilers with multiple burner design. The Inox-Lamellar fire-tube style heat exchangers of the CA3B boilers are made of 316Ti grade Stainless Steel. **Rated input: 2,500 to 6,000 MBH**

### BENEFITS AT A GLANCE

- + Low inlet gas pressure capability as low as 4" w.c. (NG) provides compatibility with a range of supply pressures
- + Dual Fuel models offer easy changeover from NG to LP with a simple turn of a key
- + Low emissions and quiet operation from fully-modulating Viessmann pre-mix cylinder burners (up to 3)
- + Can be disassembled and reassembled\* (Refer to Viessmann's technical CA3B Disassembly and Reassembly instructions)



### Technical Data

Model	CA3B	2.5	3.0	3.5	4.0	5.0	6.0
Maximum Input	MBH	2,500	3,000	3,500	4,000	5,000	6,000
Output (thermal efficiency)	MBH	2402	2883	3363	3844	4805	5766
Combustion Efficiency *	%	94.1	94.1	94.1	94.1	94.1	94.1
Thermal Efficiency *	%	96.1	96.1	96.1	96.1	96.1	96.1
Maximum Operating Pressure	psig	160	160	160	160	160	160
Power Requirements	Voltage	120	120	120	120	208†	208†
	Phase	1	1	1	1	3	3
	Hz	60	60	60	60	60	60
CA3B Single Fuel (SF)							
Minimum Input (NG)	MBH	250	300	300	400	300	400
Minimum Input (LPG)	MBH	495	495	495	660	495	660
Overall Dimensions Assembled							
Width	in.	34	34	39 ½	39 ½	39 ½	39 ½
Height	in.	78 ¾	78 ¾	84	84	84	84
Length	in.	88 ¾	88 ¾	99 ½	99 ½	136	136
Dry Weight (burner, control, insulation, and jacketing)	lbs	4233	4233	4696	4806	6261	6894
Boiler Water Content	USG	108	108	151	143	227	218
Heat Exchanger Surface ft. <sup>2</sup>	ft. <sup>2</sup>	142.7	142.7	170.2	192.5	244.1	288.8
Flue Outlet Size	dia	10	10	12	12	16	16
CA3B Dual Fuel (DF)							
Minimum Input (NG/LPG)	MBH	495	495	495	660	495	660
Overall Dimensions Assembled							
Width	in.	39 ¾	39 ¾	39 ¾	39 ¾	39 ¾	39 ¾
Height	in.	84	84	84	84	84	84
Length	in.	99 ½	99 ½	99 ½	99 ½	136	136
Dry Weight (burner, control, insulation, and jacketing)	lbs	4641	4641	4751	4861	6325	6958
Boiler Water Content	USG	158	158	151	143	227	218
Heat Exchanger Surface ft. <sup>2</sup>	ft. <sup>2</sup>	147.9	147.9	170.2	192.5	244.1	288.8
Flue Outlet Size	dia	12	12	12	12	16	16

\* Tested to ANSI/AHRI standard 1500 Performance Rating of Commercial Space Heating Boilers / DOE Test Procedure 81 FR 89276 / U.S. Standards ANSI Z21.13/CSA 4.9

† Requires 208Y/120VAC - 3 phase- 60 Hz- 4 wire (L1, L2, L3, N, G) power supply



Viessmann Sales Office  
Langley, BC Canada  
(877) 853-3288

Viessmann Manufacturing  
Company Inc.  
Waterloo, ON Canada  
(800) 387-7373  
[viessmann.ca](http://viessmann.ca)