

Technical Data Manual

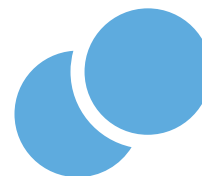
Model Numbers and Pricing: See Price List



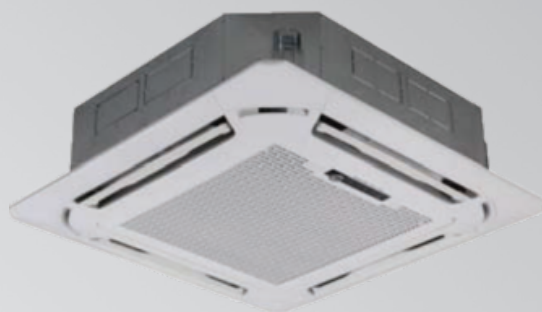
DLFSCAH, DLFSCBH, and DLFLCAH

Models 09XAK, 12XAK, 18XAK, 24XAK, 36XAK, and 48XAK

Cassette Ductless System



VITOCAL IND-C



Product may not be exactly as shown

LOW SOUND LEVELS

When noise is a concern, the ductless systems are the answer. The indoor units are whisper quiet. There are no compressors indoors, either in the conditioned space or directly over it, and there is none of the noise usually generated by air being forced through ductwork.

SECURE OPERATION

If security is an issue, outdoor and indoor units are connected only by refrigerant piping and wiring to prevent intruders from crawling through ductwork. In addition, since outdoor units can be installed close to an outside wall, coils are protected from vandals and severe weather.

FAST INSTALLATION

This compact ductless system is simple to install. A mounting bracket is standard with the indoor units and only wire and piping needs to run between indoor and outdoor units. These units are fast and easy to install ensuring minimal disruption to customers in the home or workplace. This makes the ductless systems the equipment of choice, especially in retrofit situations.

SIMPLE SERVICING AND MAINTENANCE

Removing the top panel on outdoor units provides immediate access to the control compartment, providing a service technician access to check unit operation. In addition, the draw-thru design of the outdoor section means that dirt accumulates on the outside surface of the coil. Coils can be cleaned quickly from inside using a pressure hose and detergent.

On all indoor units, service and maintenance expense is reduced due to easy-to-use cleanable filters. In addition, these cassette systems have extensive self-diagnostics to assist in troubleshooting.

BUILT-IN RELIABILITY

Ductless system indoor and outdoor units are designed to provide years of trouble-free operation.

The in-ceiling cassette units include protection against freeze-up and high evaporator temperatures on heat pumps.

The condensing units on heat pumps are protected by a three minute time delay before the compressor starts the over-current protection and the high temperature protection.

INDIVIDUAL ROOM COMFORT

Maximum comfort is provided because each space can be controlled individually based on usage pattern. The air sweep feature provided permits optimal room air mixing to eliminate hot and cold spots for occupant comfort. In addition, year-round comfort can be provided with heat pumps.

ECONOMICAL OPERATION

The ductless system design allows individual room heating or cooling when required. There is no need to run large supply-air fans or chilled water pumps to handle a few spaces with unique load patterns. In addition, because air is moved only in the space required, no energy is wasted moving air through ducts.

EASY-TO-USE CONTROLS

The in-ceiling cassette has microprocessor-based controls to provide the ultimate in comfort and efficiency. The user friendly wireless remote control provides the interface between user and the unit.

FACTORY INSTALLED CONDENSATE LIFT PUMP

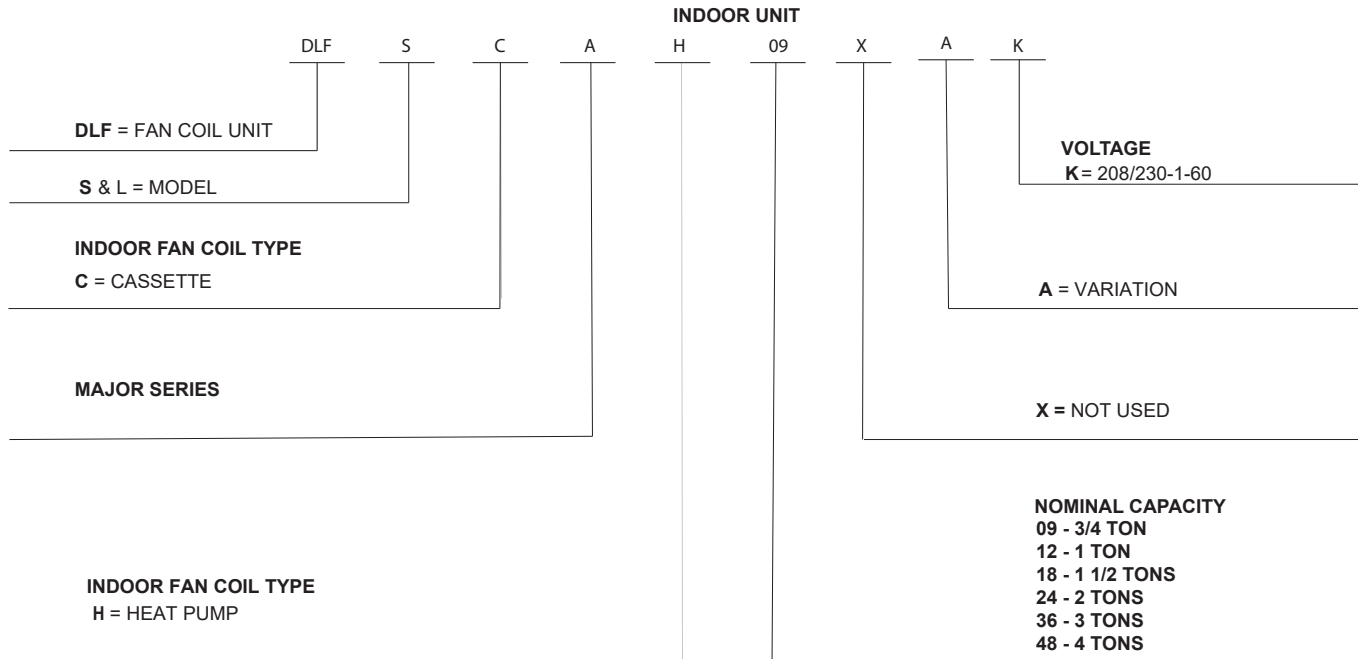
Customizing these ductless systems to your application is easily accomplished. The factory installed condensate lift pump on the cassette fan coil unit provides installation flexibility.

OPTIONAL WIRED CONTROLLER

AGENCY LISTINGS

All systems are listed with AHRI (Air Conditioning, Heating & Refrigeration Institute), and ETL.

MODEL NUMBER NOMENCLATURE



Use of the AHRI Certified TM Mark indicates a manufacturer's participation in the program For verification of certification for individual products, go to www.ahridirectory.org.

STANDARD FEATURES AND ACCESSORIES

Ease Of Installation	
Mounting Brackets	S
Low Voltage Controls	S
Comfort Features	
Microprocessor Controls	S
Wired Remote Control	A
Wireless Remote Control	S
Wi-Fi Remote Control	A
Automatic Horizontal Air Sweep	S
Air Direction Control	S
Auto Restart Function	S
Cold Blow Protection On Heat Pumps	S
Freeze Protection Mode On Heat Pumps	S
Turbo Mode	S
Silence Mode	S
Auto Changeover On Heat Pumps	S
Follow Me	S
Energy Saving Features	
Sleep Mode	S
Stop/Start Timer	S
46°F Heating Mode (Heating Setback)	S
Safety And Reliability	
Indoor Coil Freeze Protection	S
Indoor Coil High Temp Protection in Heating Mode	S
Aluminum Golden Hydrophilic pre-coated fins	S
Ease Of Service And Maintenance	
Cleanable Filters	S
Diagnostics	S
Liquid Line Pressure Taps	S
Condensate Drain Adaptor	S
Application Flexibility	
Condensate Lift Pump	S

Legend

S - Standard

A - Accessory

ACCESSORIES

ORDERING NO.	DESCRIPTION	FOR MODELS
KSACN0101AAA	Wired Remote Control with Timer Function	Sizes 09 - 18
KSACN0501AAA	Wired Remote Control 7 day Programmable	All sizes
KSALG0202AAA	Grille/Ceiling Panel 3ft x 3 ft	Sizes 24 - 48
KSAIF0401AAA	Wi-Fi Kit	All sizes
53DS-900---089	Insulated 25' Line Set - 1/4" x 3/8"	Size 09
53DS-900---008	Insulated 25' Line Set - 1/4"x1/2"	Sizes 12, 18

INDOOR UNIT ACCESSORIES

Grille

To maximize shipping efficiency, the grille for the in-ceiling cassette is set up as an accessory.

NOTE: Grille is required.

DIMENSIONS

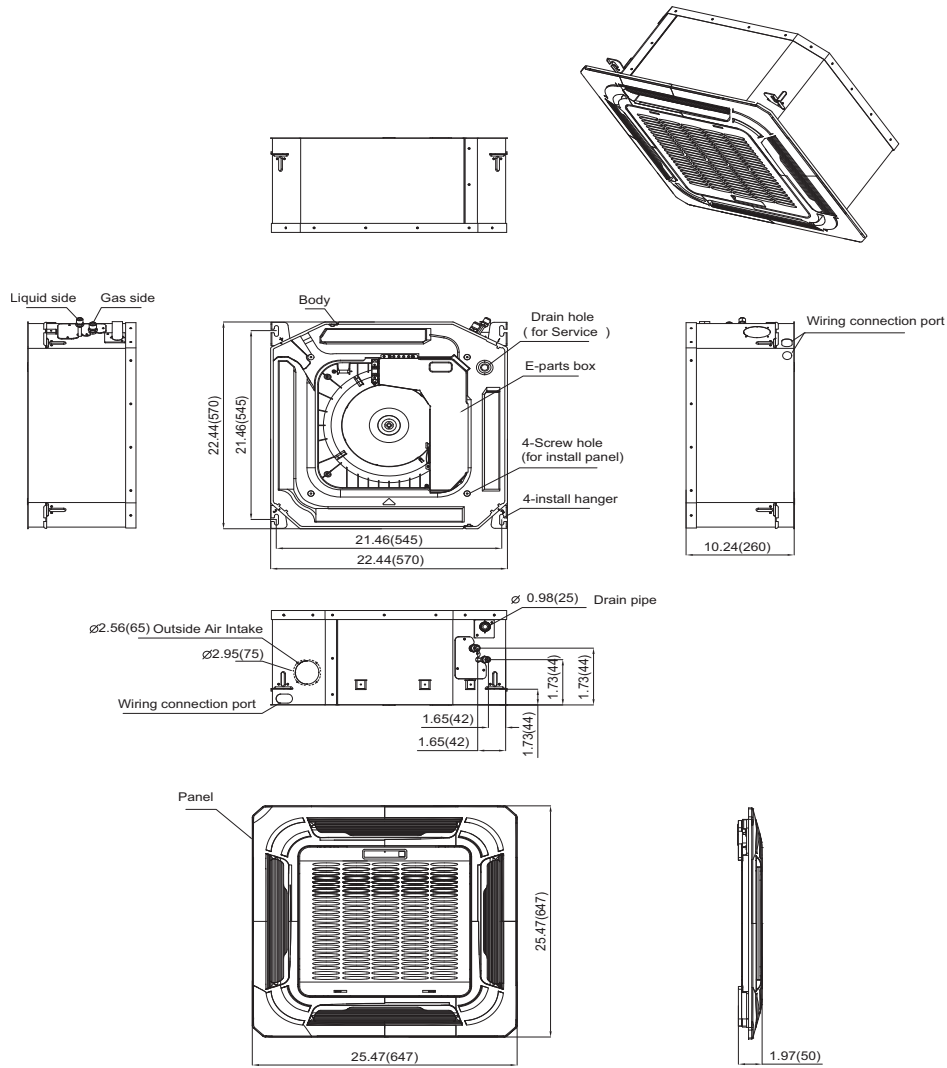


Fig. 4 — Indoor Unit (Sizes 9-18)

UNIT SIZE		9K		12K		18K		24K		36K		48K	
		Body	Panel	Body	Panel	Body	Panel	Body	Panel	Body	Panel	Body	Panel
DIMENSIONS													
Height	in (mm)	10.24 (260)	1.97 (50)	10.24 (260)	1.97 (50)	10.24 (260)	1.97 (50)	8.07 (205)	2.17 (55)	9.65 (245)	2.17 (55)	11.3 (287)	2.17 (55)
Width	in (mm)	22.44 (570)	25.47 (647)	22.44 (570)	25.47 (647)	22.44 (570)	25.47 (647)	33.07 (840)	37.4 (950)	33.07 (840)	37.4 (950)	33.07 (840)	37.4 (950)
Depth	in (mm)	22.44 (570)	25.47 (647)	22.44 (570)	25.47 (647)	22.44 (570)	25.47 (647)	33.07 (840)	37.4 (950)	33.07 (840)	37.4 (950)	33.07 (840)	37.4 (950)
PACKAGING													
Height	in (mm)	11.42 (290)	4.84 (123)	11.42 (290)	4.84 (123)	11.42 (290)	4.84 (123)	8.54 (217)	3.54 (90)	10.12 (257)	3.54 (90)	11.5 (292)	3.54 (90)
Width	in (mm)	25.79 (655)	28.15 (715)	25.79 (655)	28.15 (715)	25.79 (655)	28.15 (715)	35.43 (900)	40.75 (1035)	35.43 (900)	40.75 (1035)	35.43 (900)	40.75 (1035)
Depth	in (mm)	25.79 (655)	28.15 (715)	25.79 (655)	28.15 (715)	25.79 (655)	28.15 (715)	35.43 (900)	40.75 (1035)	35.43 (900)	40.75 (1035)	35.43 (900)	40.75 (1035)
Weight-Gross	Lbs (kg)	41.88 (19)	9.92 (4.5)	41.88 (19)	9.92 (4.5)	46.3 (21)	9.92 (4.5)	54.23 (24.6)	17.64 (8)	66.14 (30)	17.64 (8)	72.53 (32.9)	17.64 (8)
Weight-Net		35.27 (16)	5.51 (2.5)	35.27 (16)	5.51 (2.5)	39.68 (18)	5.51 (2.5)	46.3 (21)	11.02 (5)	58.2 (26.4)	11.02 (5)	63.27 (28.7)	11.02 (5)

DIMENSIONS (CONT)

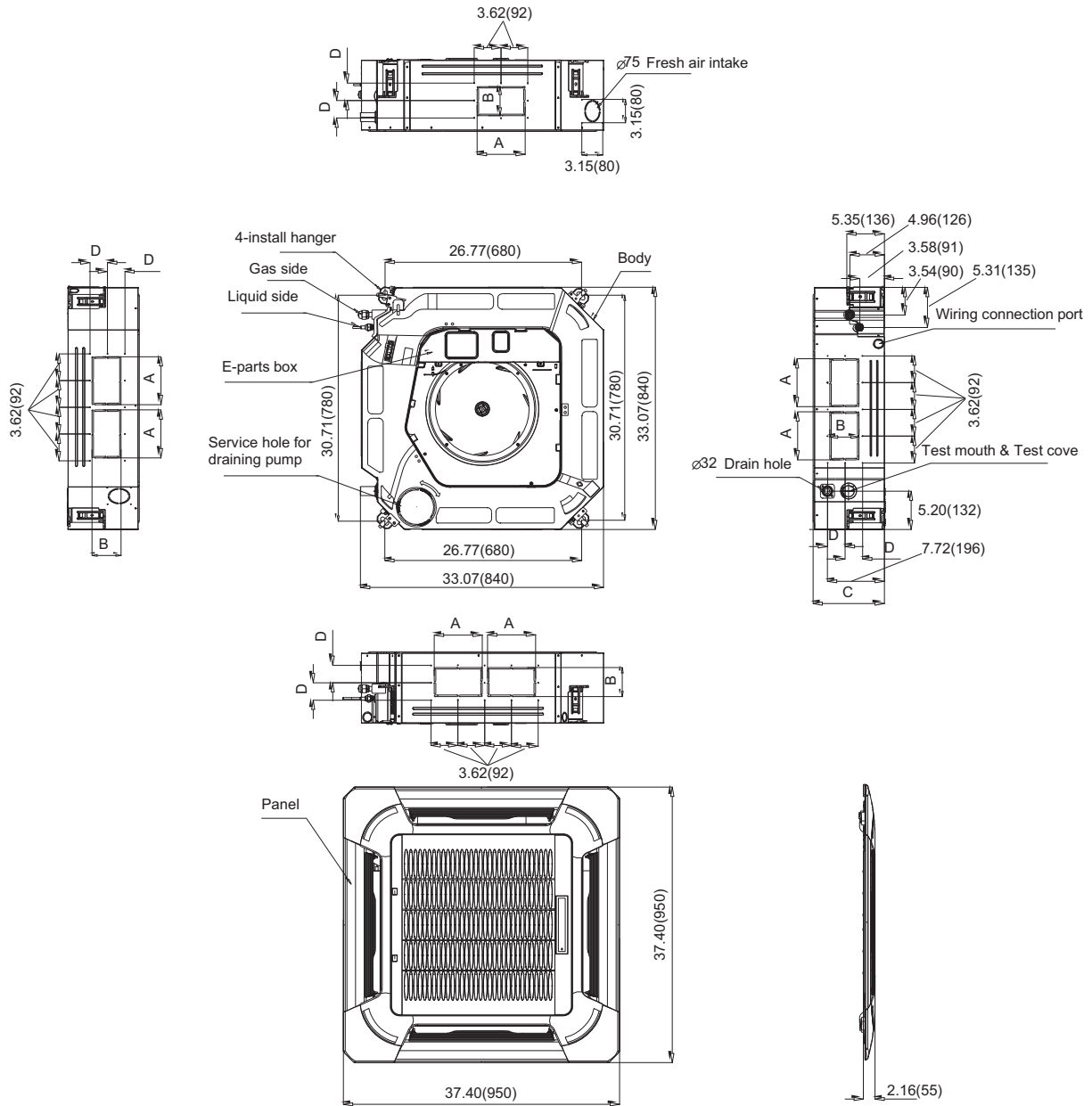


Fig. 5 — Indoor Unit (Sizes 24-48)

Capacity (Btu/h)		A	B	C	D
24K	mm	160	75	205	50
	inch	6.30	2.95	8.07	1.97
36K	mm	160	95	245	60
	inch	6.30	3.74	9.65	2.36
48K	mm	160	95	287	60
	inch	6.30	3.74	11.30	2.36

CLEARANCES

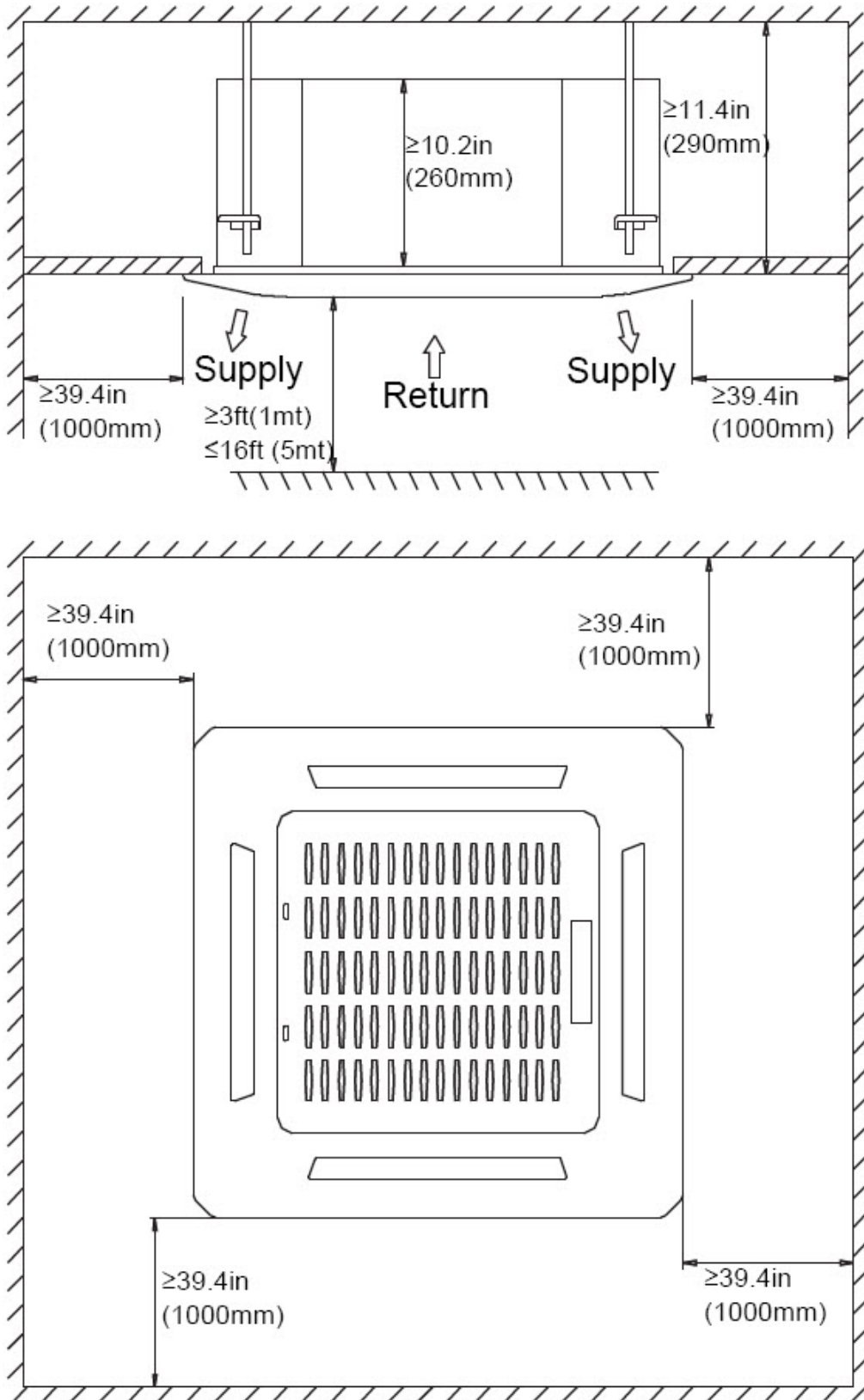


Fig. 6 — Clearances

SPECIFICATIONS

		Heat Pump					
System	Size	9	12	18	24	36	48
Electrical	Voltage, Phase, Cycle	208/230-1-60	208/230-1-60	208/230-1-60	208/230-1-60	208/230-1-60	208/230-1-60
	Power Supply	Indoor unit powered from outdoor unit					
	MCA	0.2	0.2	0.2	0.3	0.8	1.6
Controls	Wireless Remote Controller (° F/° C Convertible)	Standard	Standard	Standard	Standard	Standard	Standard
	Wired Remote Controller (° F/° C Convertible)	Optional	Optional	Optional	Optional	Standard	Standard
Operating Range	Cooling Indoor DB Min -Max	63~ 90 (17~ 32)	63~ 90 (17~ 32)	63~ 90 (17~ 32)	62~ 90 (17~ 32)	63~ 90 (17~ 32)	63~ 90 (17~ 32)
	Heating Indoor DB Min -Max	32~ 86 (0~ 30)	32~ 86 (0~ 30)	32~ 86 (0~ 30)	32~ 86 (0~ 30)	32~ 86 (0~ 30)	32~ 86 (0~ 30)
Piping	Pipe Connection Size - Liquid	1/4 (6.35)	1/4 (6.35)	1/4 (6.35)	3/8 (9.52)	3/8 (9.52)	3/8 (9.52)
	Pipe Connection Size - Suction	3/8 (9.52)	1/2 (12.7)	1/2 (12.7)	5/8 (16)	5/8 (16)	5/8 (16)
Indoor Coil	Face Area	3.1	3.1	3.1	3.6	4.6	5.2
	No. Rows	1	2	2	2	3	3
	Fins per inch	19	19	19	18	18	18
	Circuits	2	4	4	8	10	10
Indoor	Body Unit Width	22.44 (570)	22.44 (570)	22.44 (570)	33.07 (840)	33.07 (840)	33.07 (840)
	Body Unit Height	10.24 (260)	10.24 (260)	10.24 (260)	8.07 (205)	9.65 (245)	11.3 (287)
	Body Unit Depth	22.44 (570)	22.44 (570)	22.44 (570)	33.07 (840)	33.07 (840)	33.07 (840)
	Body Net Weight	35.27 (16)	35.27 (16)	39.68 (18)	46.3 (21)	58.2 (26.4)	63.27 (28.7)
	Panel Unit Width	25.47 (647)	25.47 (647)	25.47 (647)	37.4 (950)	37.4 (950)	37.4 (950)
	Panel Unit Height	1.97 (50)	1.97 (50)	1.97 (50)	2.17 (55)	2.17 (55)	2.17 (55)
	Panel Unit Depth	25.47 (647)	25.47 (647)	25.47 (647)	37.4 (950)	37.4 (950)	37.4 (950)
	Panel Net Weight	5.51 (2.5)	5.51 (2.5)	5.51 (2.5)	11.02 (5)	11.02 (5)	11.02 (5)
	Number of Fan Speeds	3	3	3	3	3	3
	Airflow (lowest to highest)	260/320/380	280/340/400	290/350/420	625/761/878	809/958/1095	853/1030/1177
	Sound Pressure (lowest to highest)	34/39/44	36/39/42	46/48/50	47/50/52	49/52/55	49/52/55
	Air throw Data	23 (7)	23 (7)	30 (9)	30 (9)	30 (9)	30 (9)
	Moisture removal	1.58 (0.75)	2.88 (1.366)	4.26 (2.02)	5.22 (2.47)	8.53 (4.04)	13.5 (6.39)
	Field Drain Pipe Size O.D.	1 (25.4)	1 (25.4)	1 (25.4)	1 (25.4)	1 (25.4)	1 (25.4)

NOTE: Performance may vary based on the compatible outdoor units. See respective pages for performance data.

NOTE: See the current compatibility chart for list of indoor unit and outdoor unit match ups.

APPLICATION DATA

UNIT SELECTION

Select equipment to either match or handle slightly less than the anticipated peak load. This provides better humidity control, fewer unit cycles, and less part-load operation.

For units used in spaces with high sensible loads, base equipment selection on the unit sensible load, not on the total anticipated load.

Adjust for anticipated room wet bulb temperature to avoid undersizing the equipment.

UNIT MOUNTING (INDOOR)

Refer to unit Installation Instructions for further details.

Unit leveling - For reliable operation, units should be level in all planes. Align and level the unit by adjusting the nuts and lock-nuts on the threaded hangers.

Clearance - A minimum of 12 inches (304.8 mm) of clearance is required in the false ceiling.

Unit location - Placing the unit in the center of the room provides the best air circulation and comfort. The unit return and discharge should not be obstructed by anything which may cause unit short cycling or air recirculation.

Installation Template - Fan coil units are supplied with a cardboard template to help match the position of the hangers, refrigerant lines, condensate drain pipe and power supply cable.

UNIT MOUNTING (OUTDOOR)

Refer to the unit's Installation Instructions for further details.

DO NOT install the indoor or outdoor units in a location with special environmental conditions. For those applications, contact your ductless representative.

SUPPORT

Adequate support must be provided to support the weight of all fan coils.

SYSTEM OPERATING CONDITIONS

OPERATING RANGE Min/Max °F (°C)		
	Cooling	Heating
Indoor DB	63 / 90 (17 / 32)	32 / 86 (0 / 30)
Indoor WB	59 / 84 (15 / 29)	

DRAIN CONNECTIONS

Install drains to meet the local sanitation codes. The in-ceiling cassette is supplied with a condensate lift pump that is capable of lifting the water 29.5in (750mm) above the top of the unit. A downward sloped condensate drain pipe can be used to dispose of water.

REFRIGERANT LINES

General Refrigerant Line Sizing:

1. The outdoor units are shipped with a full charge of R410A refrigerant.
2. Refrigerant lines should not be buried in the ground. If it is necessary to bury the lines, not more than 36-in (914 mm) should be buried. Provide a minimum 6-in (152 mm) vertical rise to the service valves to prevent refrigerant migration.
3. Both lines must be insulated. Use a minimum of 1/2-in. (12.7 mm) thick insulation. Closed-cell insulation is recommended in all long-line applications.
4. Special consideration should be given to isolating interconnecting tubing from the building structure. Isolate the tubing so that vibration or noise is not transmitted into the structure.

WIRING

All wires must be sized per NEC (National Electrical Code) or CEC (Canadian Electrical Code) and local codes. Use the Electrical Data table MCA (minimum circuit amps) and MOCP (maximum over current protection) to correctly size the wires and the disconnect fuse or breakers respectively.

Recommended Connection Method for Power and Communication Wiring:

The main power is supplied to the outdoor unit. The field supplied 14/3 stranded wire with ground with a 600 volt insulation rating, power/communication wiring from the outdoor unit to indoor unit consists of four (4) wires and provides the power for the indoor unit. Two wires are line voltage AC power, one is communication wiring (S) and the other is a ground wire. Wiring between indoor and outdoor unit is polarity sensitive. The use of BX wire is **NOT** recommended.

If installed in a high Electromagnetic field (EMF) area and communication issues exists, a 14/2 stranded shielded wire can be used to replace L2 and (S) between outdoor unit and indoor unit landing the shield onto ground in the outdoor unit only.



CAUTION

EQUIPMENT DAMAGE HAZARD

Failure to follow this caution may result in equipment damage or improper operation. Wires should be sized based on NEC and local codes.



CAUTION

EQUIPMENT DAMAGE HAZARD

Failure to follow this caution may result in equipment damage or improper operation.

Be sure to comply with local codes while running wire from the indoor unit to the outdoor unit.

Every wire must be connected firmly. Loose wiring may cause the terminal to overheat or result in unit malfunction. A fire hazard may also exist. Ensure all wiring is tightly connected. No wire should touch the refrigerant tubing, compressor or any moving parts.

Disconnecting means must be provided and shall be located within sight and readily accessible from the air conditioner.

Connecting cable with conduit shall be routed through the hole in the conduit panel.

CONTROL SYSTEM

The indoor unit is equipped with a microprocessor control to perform two functions:

1. Provide safety for the system
2. Control the system and provide optimum levels of comfort and efficiency.

The main microprocessor is located on the control board of the fan coil unit (outdoor units have a microprocessor also) with thermistors located in the fan coil air inlet and on the indoor coil. Heat pump units have a thermistor on the outdoor coil. These thermistors monitor the system's operation to keep the unit within acceptable parameters and control the operating mode.

WIRELESS REMOTE CONTROLLER

1. A wireless remote controller is supplied for system operation of all ducted units.
2. Each battery operated wireless (infrared) remote controller may be used to control more than one unit.



Fig. 7 —Wireless Remote Controller

1. A wireless remote control is supplied for system operation of all in-ceiling cassette units.
2. Each battery operated wireless (infrared) remote control may be used to control more than one unit.

WIRED REMOTE CONTROLLER (OPTIONAL)

Part Numbers:

- **KSACN0101AAA (Timer Function)**
- **KSACN0501AAA (7 Day Programmable)**

1. Optional wired remote controller used for system operation of all in-ceiling cassette units.
2. Kit includes a wired remote controller and a connecting cable.

NOTE: Extension wire available through RCD (KSACN0101AAA Part Number: 17401204001601; KSACN0501AAA Part Number: 17401204000769).

3. Connect the wire terminal between the remote controller and the indoor unit.
4. Display in °F or °C and temperature increments every 1°F or every 1°C.



Fig. 8 —KSACN0101AAA (Timer Function)



Fig. 9 —KSACN0501AAA (7 Day Programmable)

A220746

AIR FLOW DATA

SYSTEM SIZE		9K	12K	18K	24K	36K	48K
		(208/230)	(208/230)	(208/230)	(208/230)	(208/230)	(208/230)
INDOOR (CFM)	HIGH	353	350	562	878	1095	1177
	MEDIUM	306	296	485	761	958	1030
	LOW	270	253	439	625	809	853

AIR THROW DATA

UNIT CAPACITY	MAX. APROXIMATE AIR THROW ft. (m)	APROXIMATE AIR THROW RANGE ft. (m)
9K	23 (7)	11 (3.5) ~ 23 (7)
12K	23 (7)	11 (3.5) ~ 23 (7)
18K	30 (9)	13 (4) ~ 30 (9)
24K	30 (9)	13 (4) ~ 30 (9)
36K	30 (9)	13 (4) ~ 30 (9)
48K	30 (9)	13 (4) ~ 30 (9)

SOUND PRESSURE

SYSTEM SIZE		9K	12K	18K	24K	36K	48K
Cooling Operation Indoor Sound Pressure	dBa (L/M/H)	33/35/38	27/34/42	33/40/46.5	47/50/52	49/52/55	49/52/55
Heating Operation Indoor Sound Pressure	dBa (L/M/H)	31/34/37	27/34/41	32/39/45	45.7/48.8/51.2	49.5/52/54.2	49.3/52.8/55.8

SOUND PRESSURE TESTING METHOD

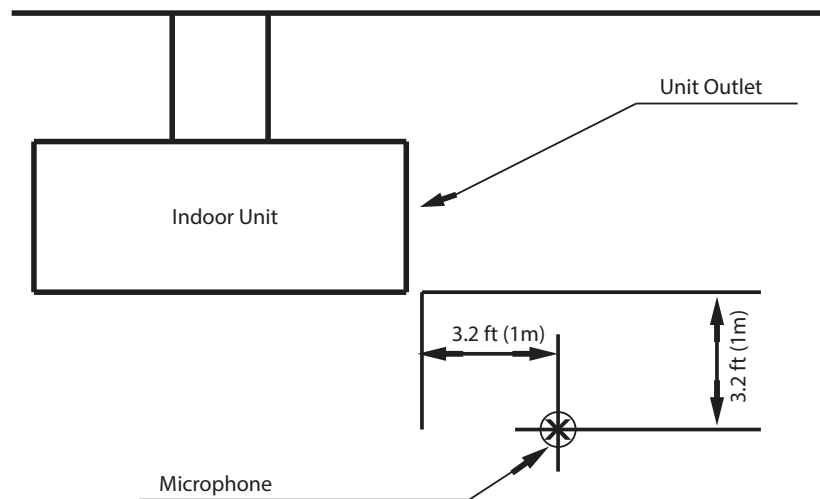


Fig. 10 —Sound Pressure Testing Method

FAN AND MOTOR SPECIFICATIONS

SYSTEM SIZE			9K	12K	18K	24K	36K	48K
Indoor Fan	Material		ABS	ABS	ABS	ABS	ABS	ABS
	Type		LX-322*147.5*12-7N	LX-322*147.5*12-7N	LX-322*147.5*12-7N	LX-460*128*12-7N	LX-476*160*12-7N	LX-476*170*12-7N
	Diameter	inch	12.7	12.7	12.7	460	476	476
	Height	inch	5.8	5.8	5.8	128	160	170
Indoor Fan Motor	Model		WZDK46-38G	WZDK46-38G	WZDK46-38G	ZKFP-42-8-1	ZKFP-124-8-2	ZKFN-170-8-1
	Volts	V	208/230	208/230	208/230	208/230	208/230	208/230
	Type		DC	DC	DC	DC	DC	DC
	Phase		3	3	3	1	1	1
	FLA		0.146	0.146	0.146	2.0	1.5	1.6
	Insulation Class		E	E	E	E	E	E
	Safe Class		IPX0	IPX0	IPX0	IPX0	IPX0	IPX0
	Input	W	45	45	45	58	141	232
	Output	W	46	46	46	42	124	170
	Range of Current	Amps	0.146±10%	0.146±10%	0.146±10%	0.332±10%	0.8±10%	1.6±10%
	Rated Current	Amps	0.146	0.146	0.146	0.332	0.8	1.6
Capacitor	µF	N/A						
Indoor Fan Motor	Rated HP	HP	0.061	0.061	0.061	0.057	0.169	0.231
	Speed	rev/ min	600/520/460	680/580/500	730/630/570	600/520/450	720/630/560	900/800/700
	Rated RPM	rev/ min	960	960	960	790	910	950
	Max. Input	W	45	45	45	103	246	270

WIRING DIAGRAMS

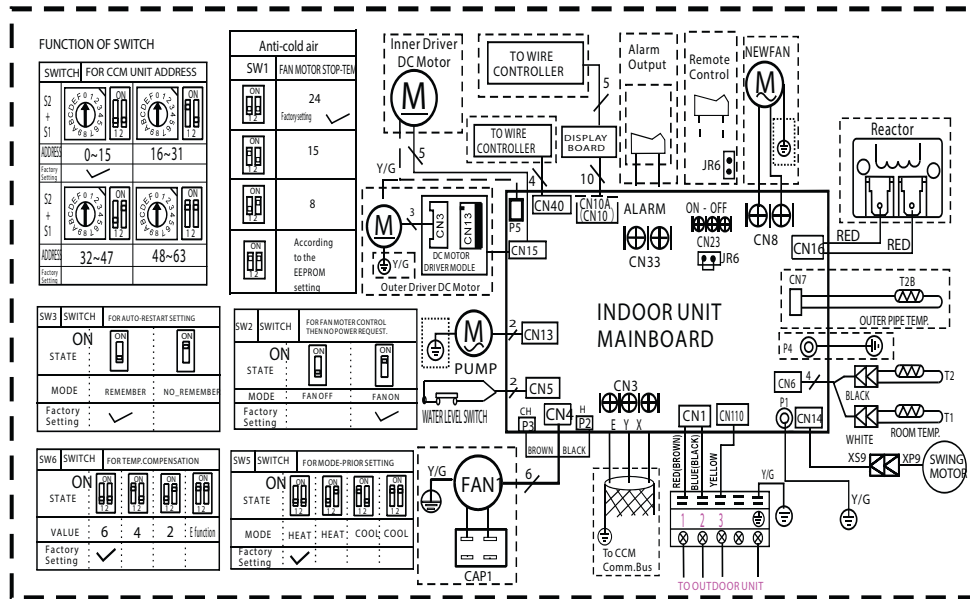


Fig. 11 — Wiring Diagram (Sizes 9K-24K)

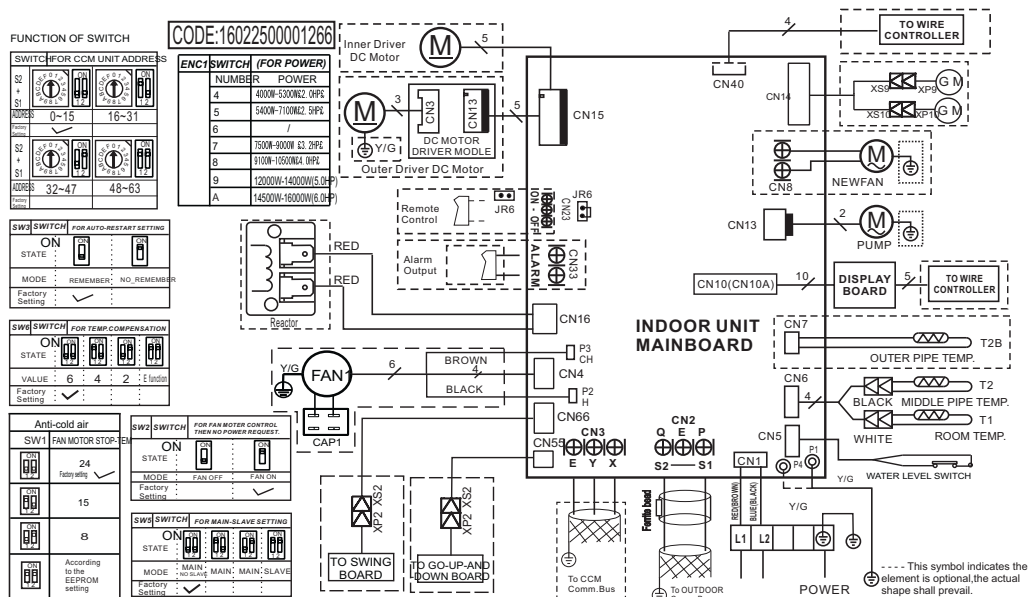


Fig. 12 — Wiring Diagram (Sizes 36K-48K)

CODE	PART NAME
CN1	Input: 230VAC High voltage Connection of the terminal
CN3	Output: 0-5VDC Connection of the CCM
P1	Output: 0V Connection of the earth
CN5	Output: 1-5VDC Connection of the Water level switch
CN6	Output: 5VDC Connection of the Room and Pipe temperature
CN10A	Output: 12VDC Connection of the Display board
CN13	Output: 220VAC High voltage Connection of the Pump
CN14	Output: 12VDC Connection of the Swing motor
CN15	Output: 320VDC High voltage Connection of the DC Fan
CN16	Output: 320VDC High voltage Connection of the Reactor
CN23	Output: 1-12VDC Connection of the Remote switch
CN33	Output: 0V Connection of the Alarm
CN40	Output: 12VDC Connection of the Wire controller
CN110	Output: 24VDC between Pin2 of CN1 connection of the S signal

Part 1 - GENERAL

1.01 System Description

Indoor, in-ceiling cassette, direct-expansion fan coils are matched with a heat pump outdoor unit.

1.02 Agency Listings

Unit are rated per AHRI Standards 210/240 and listed in the AHRI directory as a matched system.

1.03 Delivery, Storage, And Handling

Units are stored and handled per the unit manufacturer's recommendations.

1.04 Warranty (For Inclusion By Specifying Engineer)

Part 2 - PRODUCTS

2.01 Equipment

A. General:

Indoor, direct-expansion, ceiling-mounted fan coil. Unit is complete with a cooling/heating coil, fan, fan motor, piping connectors, electrical controls, microprocessor control system, and an integral temperature sensing.

B. Unit Cabinet:

Cabinet is constructed of zinc-coated steel. Fully insulated discharge and inlet grilles are attractively styled, high-impact polystyrene. Grille has hinges and can be opened to obtain access to the cleanable filters, indoor fan motor and control box.

C. Fans:

1. The fan is a centrifugal direct-drive blower type with an air intake in the center of the unit and a discharge at the perimeter. An automatic, motor-driven vertical air sweep is provided standard. Automatic motor-driven louvers are provided standard and are adjustable for a 2, 3 or 4-way discharge.
2. The air sweep operation is user selectable.

D. Coil:

The coil is a copper tube with aluminum fins and galvanized steel tube sheets. Fins are bonded to the tubes by mechanical expansion and specially golden hydrophilic pre-coated for enhanced wet-ability. A drip pan under the coil has a factory installed condensate lift pump and a drain connection for a hose attachment to remove condensate.

E. Motors:

Motors are open drip-proof, permanently lubricated ball bearing with inherent overload protection. Fan motors are 7-speed.

F. Controls:

Controls consist of a microprocessor-based control system which controls the space temperature, determines the optimum fan speed, and runs self diagnostics. The temperature control range is 62°F to 86°F (17°C to 30°C) in increments of 1°F or 1°C, and has a 46°F Heating Mode (Heating Setback). The wireless remote controller, has the ability to act as the temperature sensing location for room comfort.

GUIDE SPECIFICATIONS

INDOOR IN-CEILING CASSETTE DUCTLESS UNITS

Size Range: 3/4 to 5 Ton Nominal Cooling and Heating Capacity Model Number: **DLFSC(A/B)** and **DLFLCA**

The unit has the following functions (at a minimum):

1. An automatic restart after a power failure at the same operating conditions as at failure.
2. A timer function to provide a minimum 24-hour timer cycle for the system's Auto Start/Stop.
3. Temperature-sensing controls sense the return air temperature.
4. Indoor coil freeze protection.
5. Wireless infrared remote control to enter set points and operating conditions.
6. Automatic air sweep control to provide on or off activation of air sweep louvers.
7. Dehumidification mode which provides increased latent removal capability by modulating system operation and set point temperature.
8. A fan-only operation to provide room air circulation when no cooling is required.
9. Diagnostics to provide continuous checks of the unit operation and warn of possible malfunctions. Any error messages are displayed at the unit.
10. The fan speed control is user-selectable: high, medium, low, or microprocessor controlled automatic operation during all operating modes.
11. Automatic heating-to-cooling changeover in the heat pump mode. Control includes deadband to prevent rapid mode cycling between heating and cooling.
12. Indoor coil high temperature protection is provided to detect excessive indoor discharge temperature when unit is in the heat pump mode..

G. Filters:

The unit has a filter track with factory-supplied cleanable filters.

H. Electrical Requirements:

The indoor fan motor operates on 208-230V on model sizes 09-48, as specified. Power is supplied from the outdoor unit.

I. Operating Characteristics:

The **DLFSCA** and **DLFLCA** system has a minimum SEER (Seasonal Energy Efficiency Ratio) and HSPF at AHRI conditions, as listed on the specifications table.

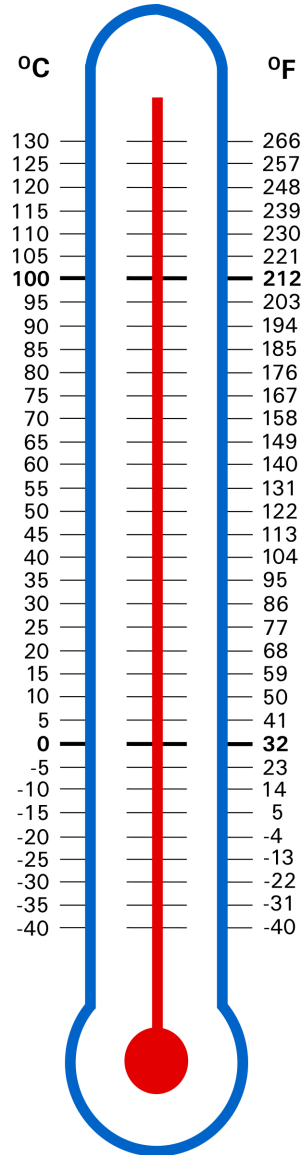
J. Refrigerant Lines:

All units should have refrigerant lines that can be oriented to connect from the left, right or back of unit. Both refrigerant lines must be insulated.



Viessmann Manufacturing Company (U.S.) Inc.
 45 Access Road
 Warwick, Rhode Island · 02886 · USA
 TechInfo Line 1-888-484-8643
 1-800-288-0667 · Fax (401) 732-0590
 www.viessmann-us.com · info@viessmann-us.com

Viessmann Manufacturing Company ULC
 750 McMurray Road
 Waterloo, Ontario · N2V 2G5 · Canada
 TechInfo Line 1-888-484-8643
 1-800-387-7373 · Fax (519) 885-0887
 www.viessmann.ca · info@viessmann.ca



Technical information subject to change without notice.

Printed on environmentally friendly
 (recycled and recyclable) paper.